



III

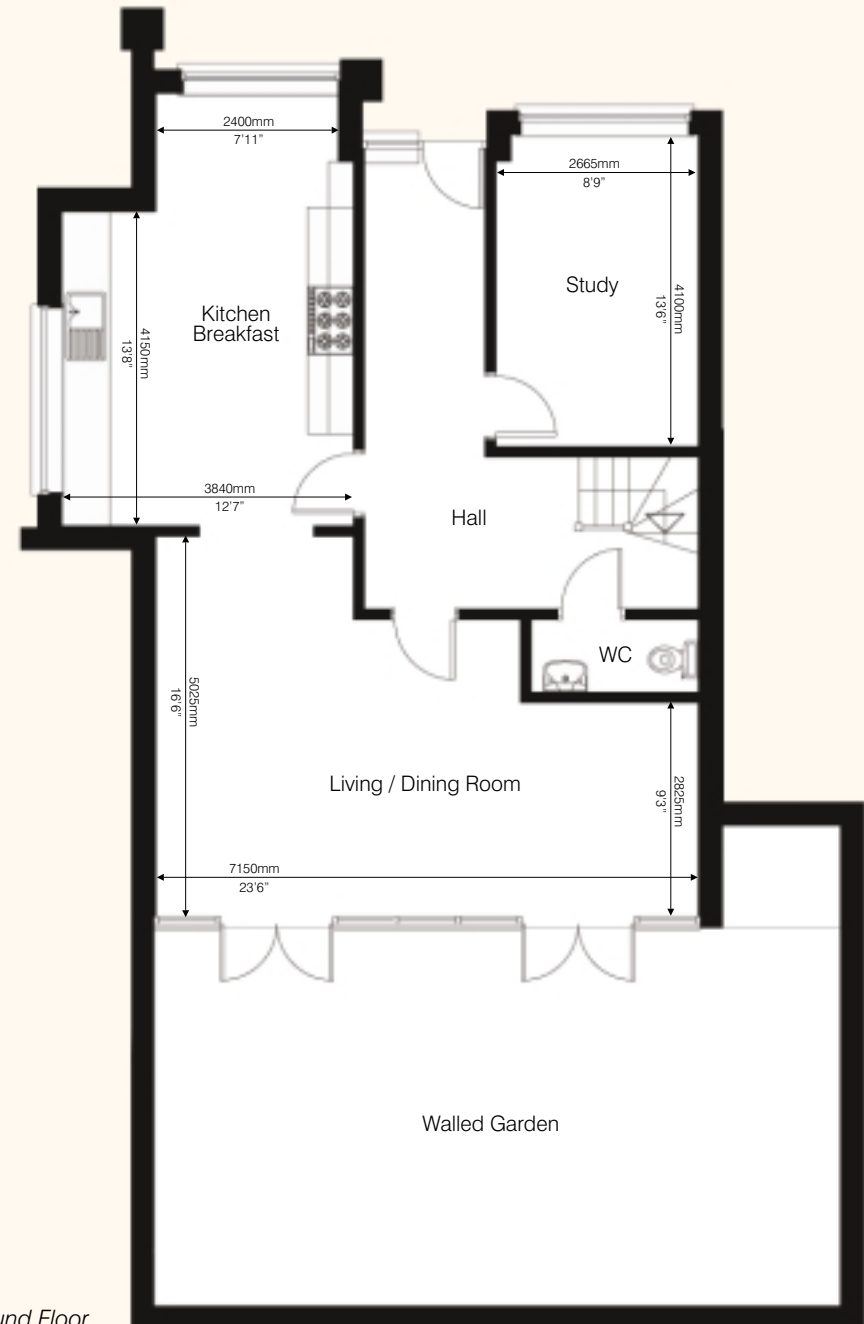
D O N A T E L L O

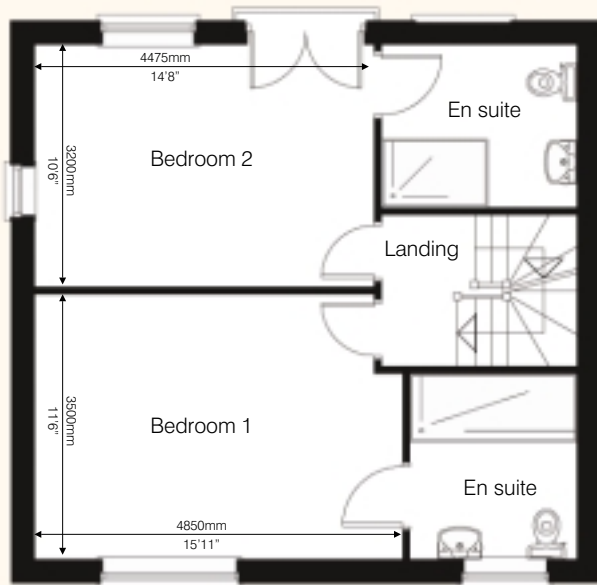
With its own walled courtyard garden, Donatello is a beautifully proportioned three storey, three bedroom villa.

The ground floor features a large kitchen / breakfast room, opening into the living / dining room, with wall-to-wall, floor-to-ceiling windows and doors opening onto a private walled garden, which blends outside and inside space to great effect. There is also a study on the ground floor.

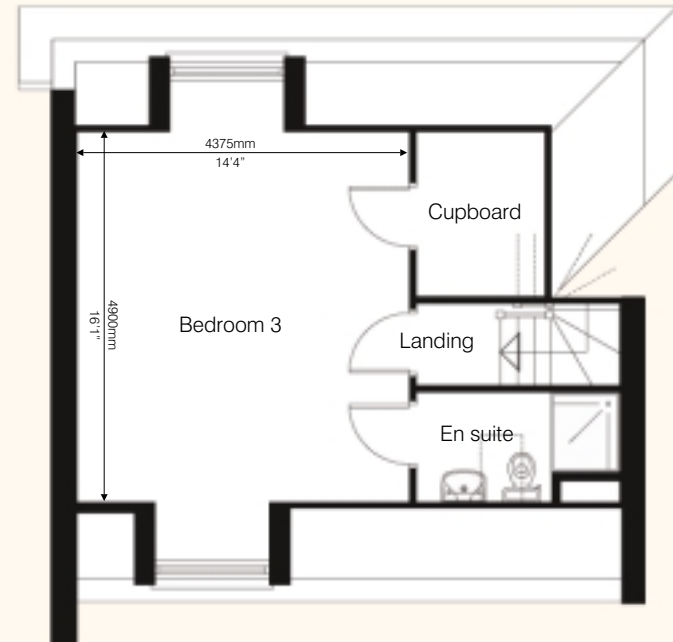
On the upper floors, there are three well proportioned bedrooms, each with its own en suite, with the large master bedroom on the second floor also benefiting from spacious walk-in storage. With en suite facilities the second floor bedroom is an ideal master bedroom or self contained guest suite.

The property also has a garage and parking space.





First Floor



Second Floor

“...a private walled garden, which blends outside and inside space to great effect.”