



L A U R A N A

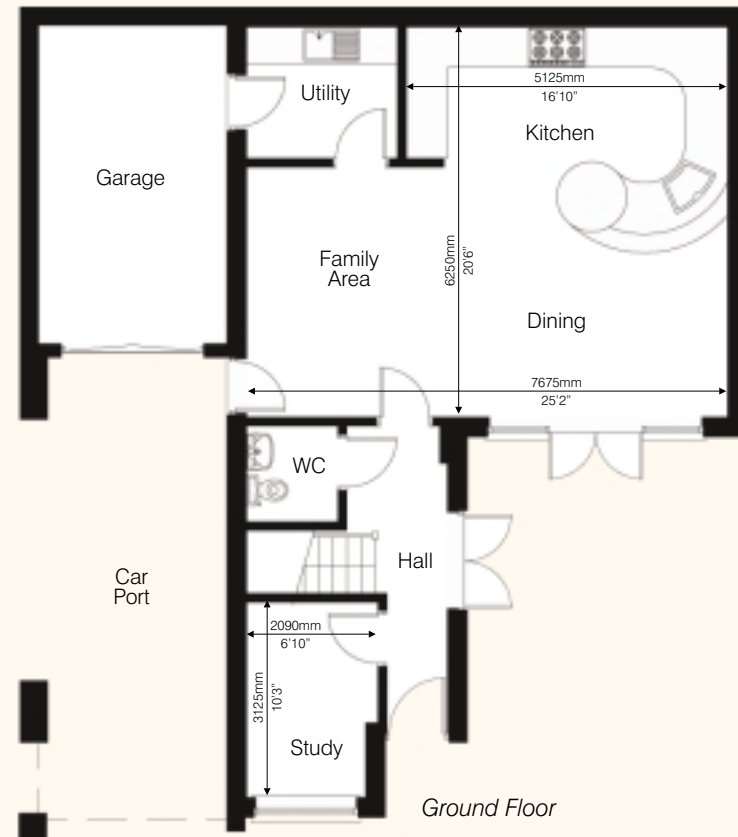
Designed with entertaining in mind, the ground floor of this four storey, four bedroom villa features a quite spectacular open-plan kitchen / family room with sweeping glossy black units. Floor-to-ceiling glazing and patio doors open onto a part-walled courtyard garden.

There is also a cloakroom, study, integral garage (with separate entrance via utility room) and car port.

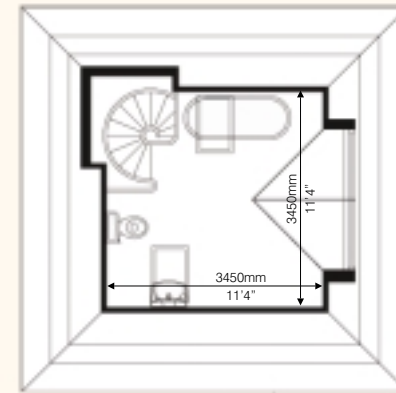
This property's unique character is enhanced by a large first floor living room with french doors opening onto a roof terrace garden.

The first floor also has two bedrooms (one with en suite).

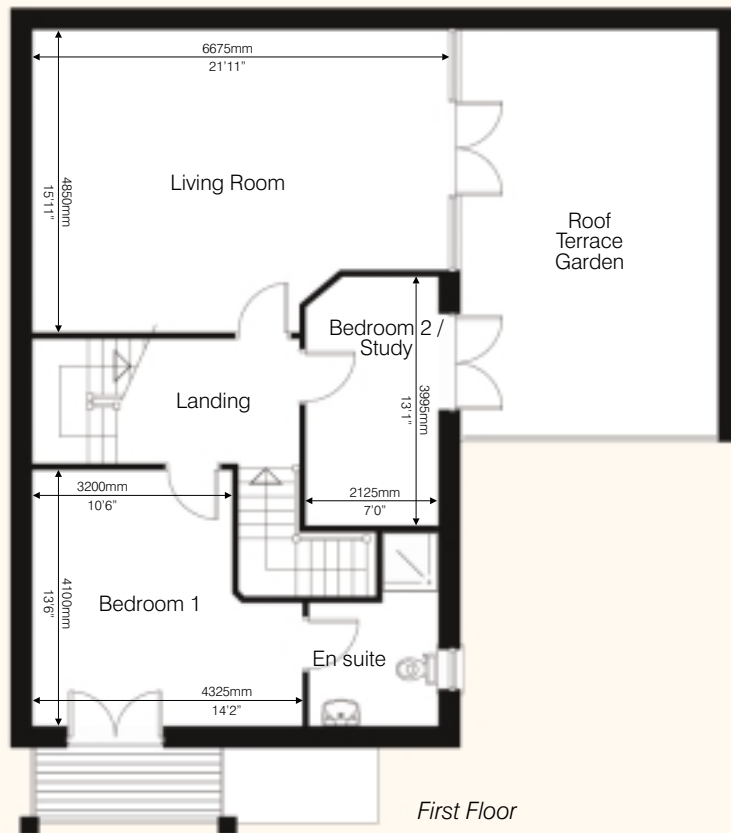
The second floor accommodation offers bedrooms 3 and 4, both with en suite, the latter in a tower accessed via a spiral staircase, with views across Poole Harbour towards the Purbecks and Poole town.



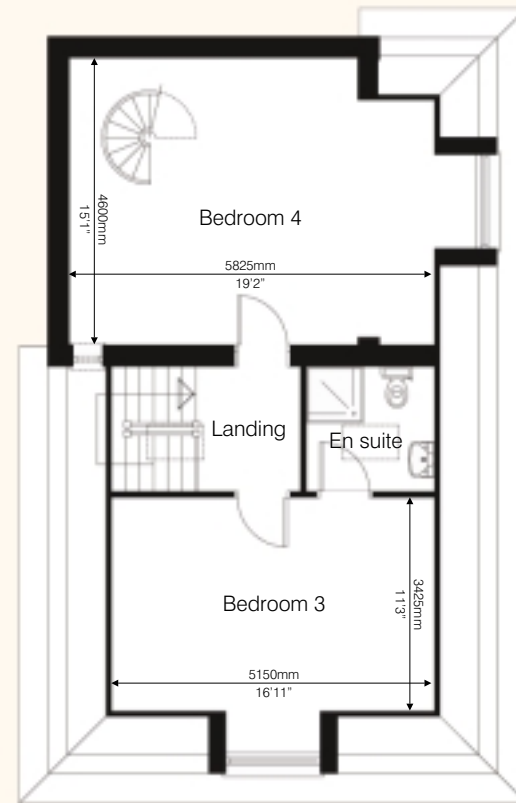
“Designed with entertaining in mind...
 ...a quite spectacular
 open-plan kitchen / family room.”



Tower En suite



First Floor



Second Floor